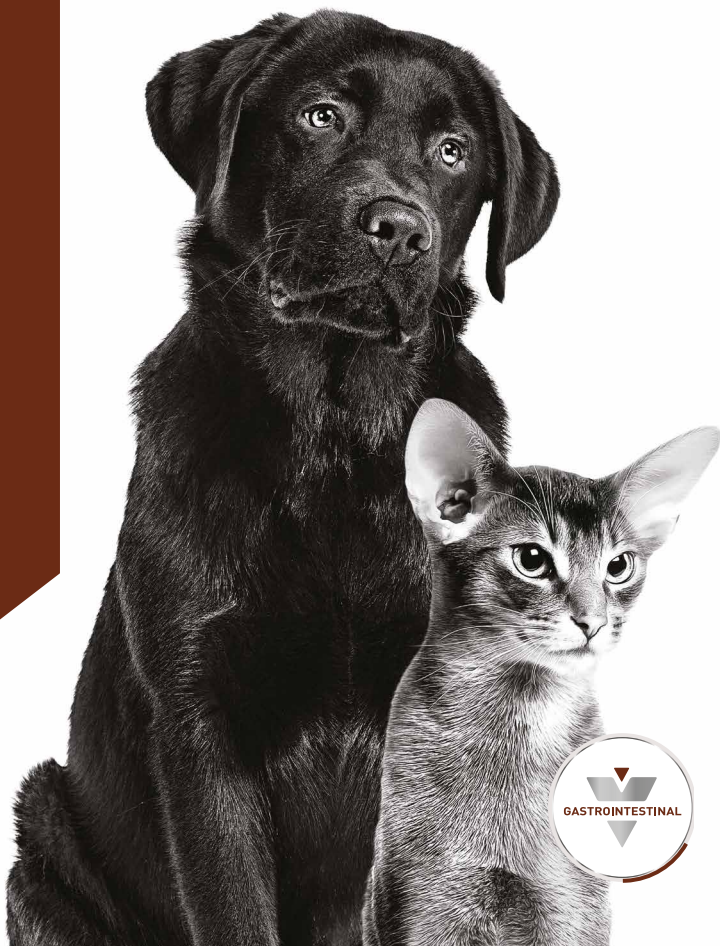




GASTROINTESTINAL NUTRITION

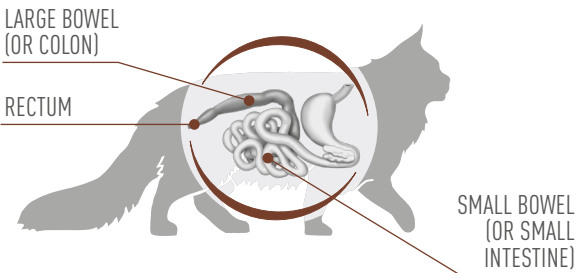
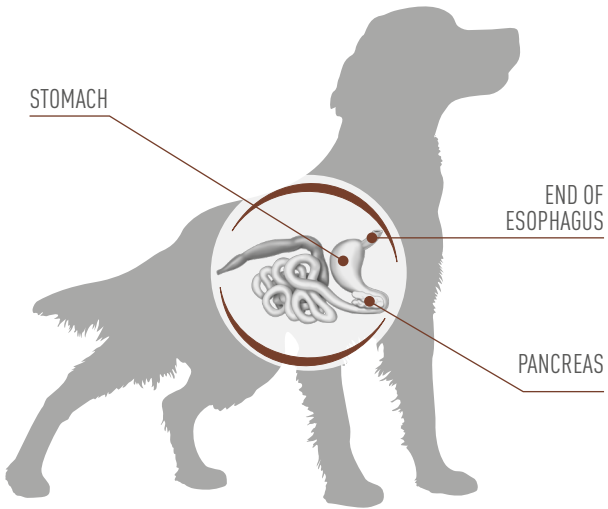
SUPPORTING THE MICROBIOME
WITH EVERY BITE



DIGESTIVE SYSTEM:

A GROUP OF ORGANS RESPONSIBLE FOR DIGESTION AND ABSORPTION OF NUTRIENTS

It comprises the **gastrointestinal tract** (oral cavity, esophagus, stomach, small and large intestines, rectum and anus), and accessory organs like the **pancreas** and **liver**.



DIGESTION IS THE PROCESS THROUGH WHICH THE ANIMAL GETS ENERGY AND ESSENTIAL NUTRIENTS FOR VITAL FUNCTIONS FROM FOOD.

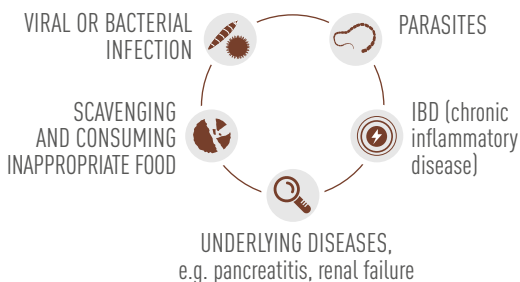
UNDERSTANDING GASTROINTESTINAL DISORDERS



If your pet shows one or more of these symptoms, the first thing to do is: **consult your veterinarian.**

CAUSES OF **DIGESTIVE DISORDERS**

Digestive disorders are difficult to diagnose, as there can be many different causes, including:



WHO WE ARE

We are Royal Canin—a pet food brand that is obsessed about the knowledge and health of individual cats and dogs. Founded in 1968 by veterinarian Dr. Jean Cathary, with over five decades of research and scientific discovery, we are determined to bring out the best health that resides in each and every pet.

WHAT SETS US APART

Once we identify a real need, nothing will stop us from developing nutritional solutions that will enhance medical treatment and address the specific needs of individual cats and dogs. Through partnerships with veterinarians, we strive to learn everything we can about pet health and how our formulas work with different breeds, sizes, lifestyles and therapeutic conditions. Stringent testing and quality control of raw materials and finished product allow us to continually provide precise nutritional solutions for pets across a host of medical conditions.

PUPPY AND KITTEN DIGESTION: A SENSITIVE SUBJECT DURING EARLY LIFE

At the time of weaning, puppy and kitten digestive abilities are not fully developed. **Digestive maturity takes place progressively during growth.** Royal Canin has Gastrointestinal diets formulated specifically for puppies and for kittens.



AVAILABLE IN DRY AND WET PRODUCTS, AND DESIGNED TO MEET THE REQUIREMENTS OF GROWING PETS

GASTROINTESTINAL HEALTH

CAT



GASTROINTESTINAL
KITTEN

GASTROINTESTINAL

GASTROINTESTINAL HEALTH

DOG



GASTROINTESTINAL
PUPPY

GASTROINTESTINAL

ROYAL CANIN® TAILORED NUTRITION

TO ADDRESS EACH PET'S INDIVIDUAL NEEDS

Over the past 50 years, researchers from Royal Canin, together with specialists and veterinary practitioners from all over the world, have been working hard toward a common goal: **improve gastrointestinal health of pets through nutrition.**

**GASTROINTESTINAL HEALTH
MODERATE CALORIE**



**GASTROINTESTINAL
MODERATE CALORIE**

**GASTROINTESTINAL HEALTH
OPTIMAL FIBER**



**GASTROINTESTINAL
FIBER RESPONSE**

**GASTROINTESTINAL HEALTH
MODERATE CALORIE**



**GASTROINTESTINAL
MODERATE CALORIE**

**GASTROINTESTINAL HEALTH
HIGH FIBER**



**GASTROINTESTINAL
HIGH FIBER**

Each **Gastrointestinal diet** is formulated with a unique blend of nutrients and ingredients to support digestive health.

HIGHLY DIGESTIBLE PROTEINS

A combination of highly digestible proteins, prebiotics and EPA and DHA (eicosapentaenoic and docosahexaenoic acids) helps support digestive health and the GI microbiome

ANTIOXIDANTS

A precise blend of vitamins and amino acids helps support a healthy immune system

GASTROINTESTINAL HEALTH FOR FOOD SENSITIVITIES



GASTROINTESTINAL
HYDROLYZED PROTEIN

SURGERY, HOSPITALIZATION OR CONVALESCENCE



RECOVERY AND RECOVERY LIQUID
GASTROINTESTINAL LOW FAT LIQUID

GASTROINTESTINAL HEALTH FAT RESTRICTED DIET



GASTROINTESTINAL
LOW FAT

FAT RESTRICTED DIET FOR FOOD SENSITIVITIES



GASTROINTESTINAL
LOW FAT
+
HYDROLYZED PROTEIN

LIVER SUPPORT



HEPATIC



THERE IS A REASON WHY YOUR VETERINARIAN RECOMMENDS A NEW DIET

Unlike a bland homemade chicken and rice diet, Royal Canin® GI formulas contain all the high-quality nutrients your pet needs to help restore their digestive health and help get them back to feeling their best.* Your veterinarian may need to recommend (and subsequently rule out) a number of different diets until the most suitable option is identified.

HOW DO I START A NEW DIET?

Always consult with your veterinarian prior to starting your pet on any nutritional program. We recommend at least a seven-day transition when starting a new diet.

DAY 1-2



DAY 3-4



DAY 5-6



DAY 7



Royal Canin USA, Inc., 500 Fountain Lakes Blvd.,
Suite 100, St. Charles, MO 63301
1-800-592-6687 - www.royalcanin.com

*<https://fdc.nal.usda.gov/index.html>

© ROYAL CANIN® SAS 2024. All Rights Reserved, Y161 rev0324